

STANDARD DEPARTURE CHART
INSTRUMENT(SID) - ICAO

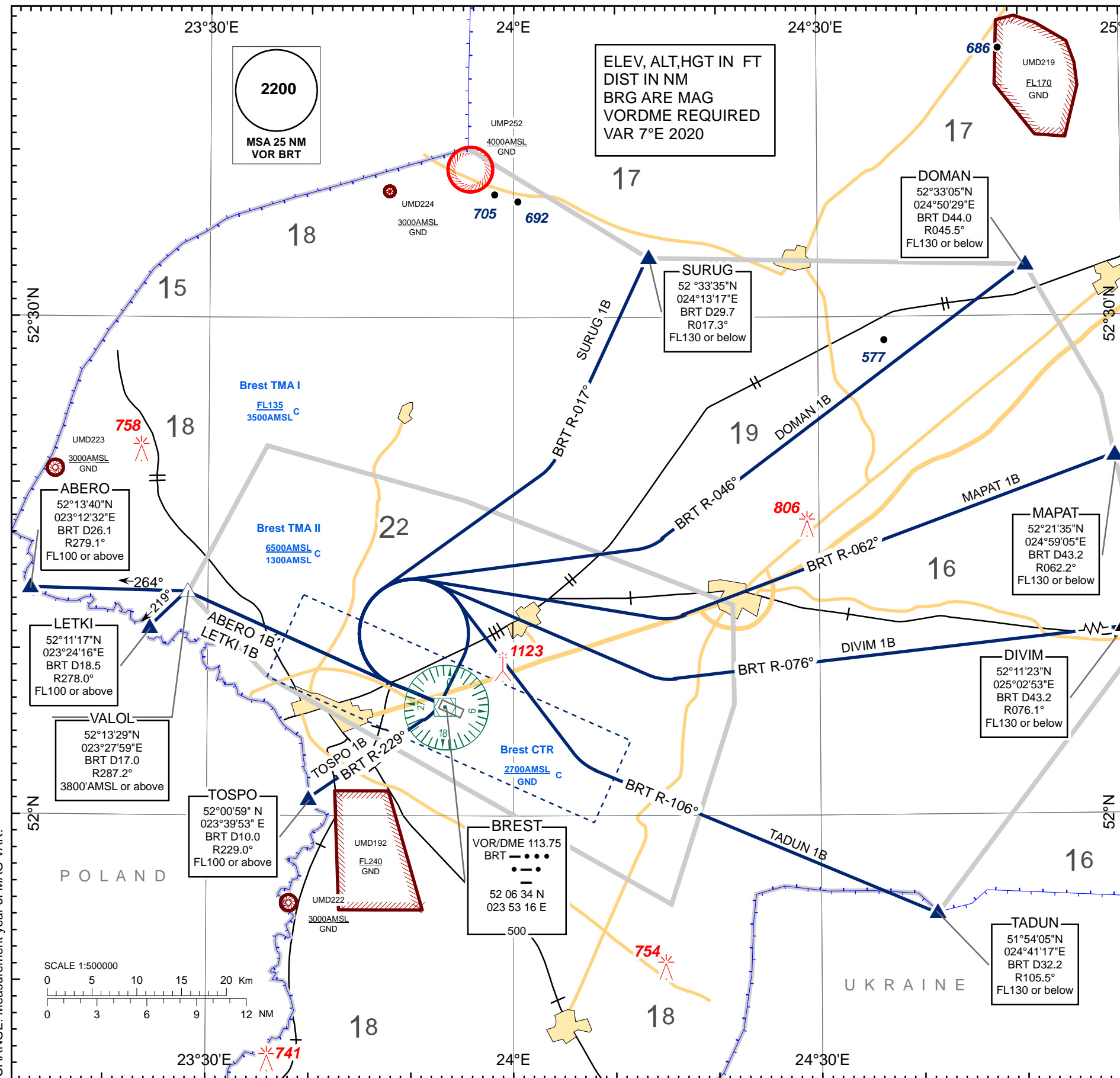
BREST
RWY29

TRANSITION ALTITUDE
6000'

Alt set: - hPa (mm on req)
- QNH (QFE on req)

TWR 127.700
MET 136.525 (EN)
118.225 (RUS)

ABERO 1B, DIVIM 1B, DOMAN 1B
LETKI 1B, MAPAT 1B, SURUG 1B
TADUN 1B, TOSPO 1B



BELAERONAVIGATSIA SOE

STANDARD INSTRUMENT DEPARTURE (SID) ROUTES

BREST RWY 29

SID NAME	ROUTE
ABERO 1B	ABERO ONE BRAVO Climb straight ahead to 1100 (636) or above, intercept BRT VOR R-287° to VALOL, turn LEFT 264° track and proceed to ABERO.
DIVIM 1B	DIVIM ONE BRAVO Climb straight ahead to 1100 (636) or above, turn RIGHT 106° track to intercept BRT VOR R-076° and proceed to DIVIM.
DOMAN 1B	DOMAN ONE BRAVO Climb straight ahead to 1100 (636) or above, turn RIGHT 076° track to intercept BRT VOR R-046° and proceed to DOMAN.
LETKI 1B	LETKI ONE BRAVO Climb straight ahead to 1100 (636) or above, intercept BRT VOR R-287° to VALOL, turn LEFT 219° track and proceed to LETKI.
MAPAT 1B	MAPAT ONE BRAVO Climb straight ahead to 1100 (636) or above, turn RIGHT 092° track to intercept BRT VOR R-062° and proceed to MAPAT.
SURUG 1B	SURUG ONE BRAVO Climb straight ahead to 1100 (636) or above, turn RIGHT 047° track to intercept BRT VOR R-017° and proceed to SURUG.
TADUN 1B	TADUN ONE BRAVO Climb straight ahead to 1100 (636) or above, turn RIGHT 136° track to intercept BRT VOR R-106° and proceed to TADUN.
TOSPO 1B	TOSPO ONE BRAVO Climb straight ahead to 1100 (636) or above, turn RIGHT to BRT, to intercept BRT VOR R-229° and proceed to TOSPO.

THIS PAGE INTENTIONALLY LEFT BLANK